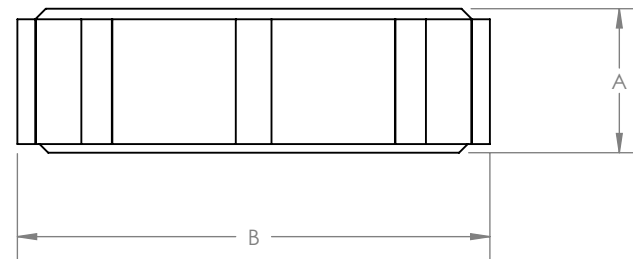


STANDARD DIMENSIONS			
PART NUMBER	PSI RATING 73°F/23°C	A INCHES (MM)	B INCHES (MM)
600-008-01	75 PSI	0.41" (10.4)	0.49" (12.4)
600-008-72	NOT RATED	0.41" (10.4)	0.49" (12.4)
600-008-80	NOT RATED	0.41" (10.4)	0.49" (12.4)
600-008-83	NOT RATED	0.08" (2.0)	0.40" (10.2)
600-010-82	NOT RATED	0.39" (10.0)	0.42" (10.7)
600-011-83	NOT RATED	0.08" (2.0)	0.50" (12.7)
600-012-81	NOT RATED	0.43" (10.9)	0.64" (16.3)
600-013-73	NOT RATED	0.42" (10.7)	0.64" (16.3)
600-013-85	NOT RATED	0.60" (15.2)	0.53" (13.5)
600-015-73	NOT RATED	0.42" (10.7)	0.72" (18.3)
600-015-84	NOT RATED	0.47" (11.9)	0.63" (16.0)
600-018-01	NOT RATED	0.51" (13.0)	0.84" (21.3)
600-018-73	NOT RATED	0.51" (13.0)	0.84" (21.3)
600-018-88	NOT RATED	0.24" (6.1)	0.73" (18.5)
600-020-73	NOT RATED	0.51" (13.0)	0.93" (23.6)
600-022-73	NOT RATED	0.52" (13.2)	1.03" (26.2)
600-023-01	60 PSI	0.40" (10.2)	0.96" (24.3)
600-024-01	25 PSI	0.54" (13.7)	1.08" (27.4)
600-024-71	25 PSI	0.54" (13.7)	1.08" (27.4)
600-028-01	NOT RATED	0.60" (15.2)	1.25" (31.8)
600-028-73	NOT RATED	0.60" (15.2)	1.25" (31.8)
600-029-01	NOT RATED	0.52" (13.2)	1.41" (35.8)
600-031-88	NOT RATED	0.21" (5.3)	1.22" (31.0)
600-033-01	10 PSI	0.62" (15.7)	1.44" (36.6)
600-033-71	10 PSI	0.62" (15.7)	1.44" (36.6)
600-038-89	NOT RATED	0.62" (15.7)	1.44" (36.6)

**NOTES:**  
**1. CONSULT SAVILLEX FOR ELEVATED TEMPERATURE RATINGS.**  
**2. PSI RATINGS ARE BASED ON ABOVE CLOSURES WITH MATING SAVILLEX VESSELS**



TITLE:  
**CLOSURE DIMENSIONS**

**STANDARD DIMENSIONS**

<b>PART NUMBER</b>	<b>PSI RATING 73°F/23°C</b>	<b>A INCHES (MM)</b>	<b>B INCHES (MM)</b>
600-045-01	NOT RATED	1.59" (40.3)	2.12" (53.8)
600-045-02	NOT RATED	1.59" (40.3)	2.12" (53.8)
600-045-72	NOT RATED	1.50" (38.2)	2.12" (53.8)
600-053-01	10 PSI	0.75" (19.1)	2.46" (62.5)
600-053-71	10 PSI	0.75" (19.1)	2.46" (62.5)
600-058-04	75 PSI	1.08" (27.4)	2.29" (58.2)
600-058-06	75 PSI	1.08" (27.4)	2.29" (58.2)
600-070-01	3 PSI	0.77" (19.6)	3.15" (80.0)
600-070-71	3 PSI	0.77" (19.6)	3.15" (80.0)
600-089-01	3 PSI	0.91" (23.1)	3.93" (99.8)
600-089-02	NOT RATED	0.63" (16.0)	3.68" (93.4)
600-089-71	3 PSI	0.91" (23.1)	3.93" (99.8)
600-110-01	3 PSI	1.14" (29.0)	4.83" (122.7)
600-110-71	3 PSI	1.14" (29.0)	4.83" (122.7)

**NOTES:**  
**1. CONSULT SAVILLEX FOR ELEVATED TEMPERATURE RATINGS**  
**2. PSI RATINGS ARE BASED ON ABOVE CLOSURES WITH MATING SAVILLEX VESSELS**

